

45/40

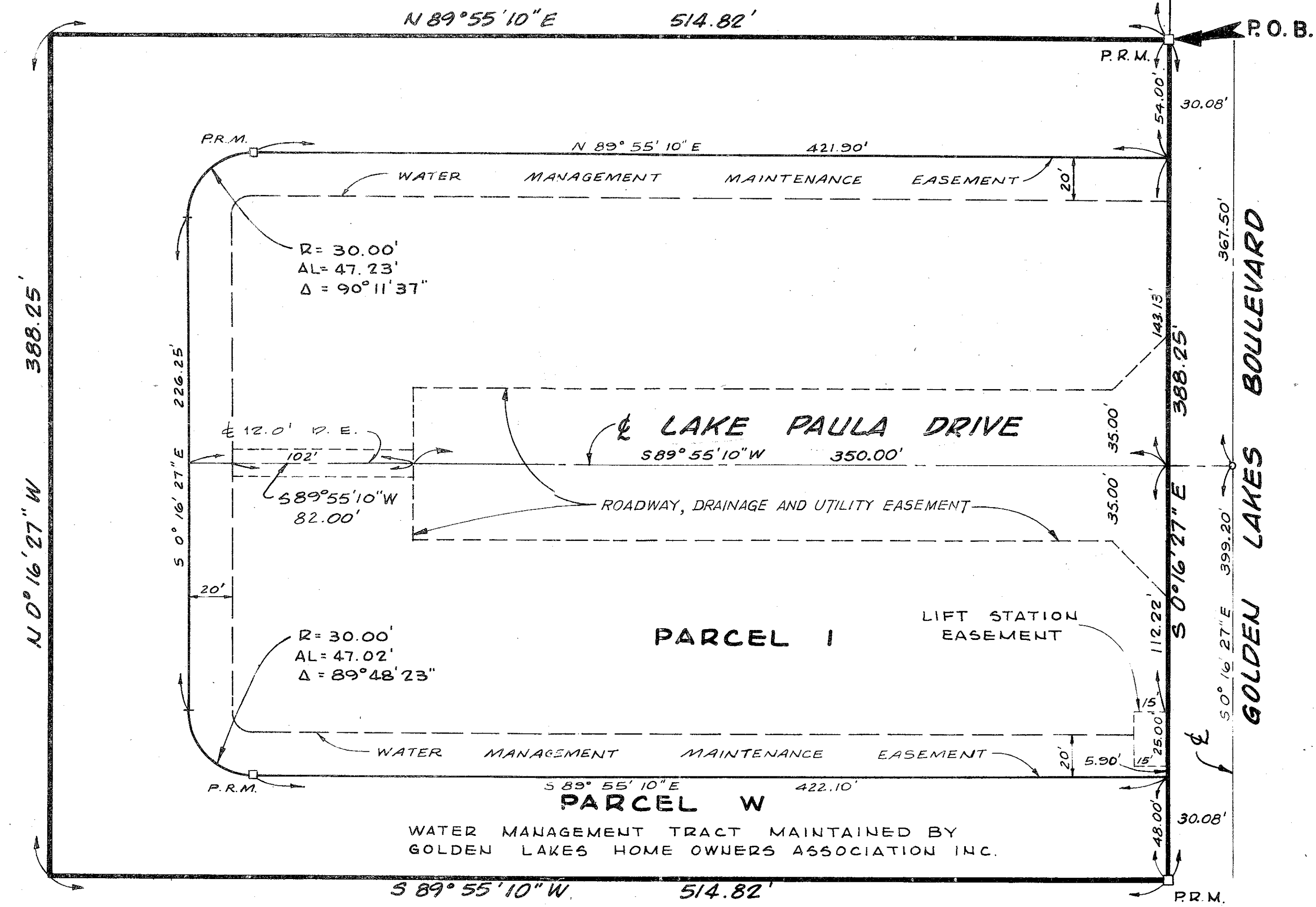
40

A PLANNED UNIT DEVELOPMENT  
**GOLDEN LAKES VILLAGE SECTION ELEVEN-A**  
 SHEET 2 OF 2

PALM BEACH FARMS CO., PLAT NO. 3  
 P.B. 2, PAGES 45-54

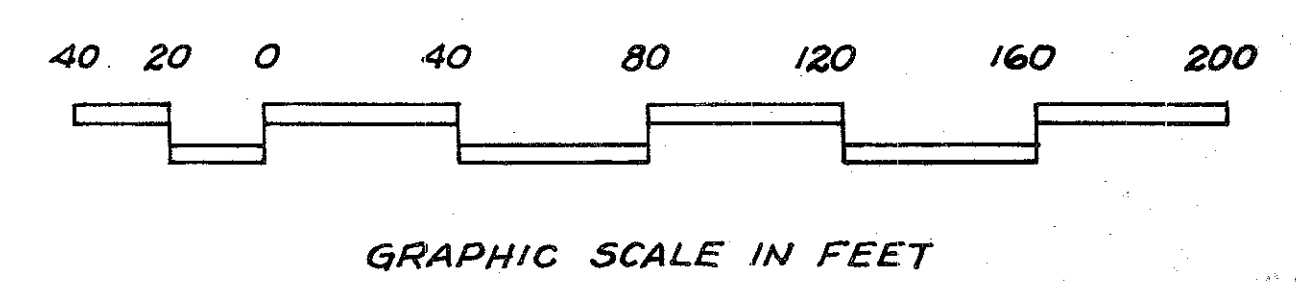
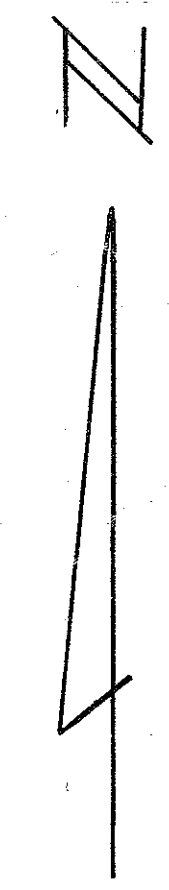
P.O.C. N.W. CORNER GOLDEN LAKES VILLAGE SECTION NINE REPLAT (P.B. 40, PAGES 184-187)  
 54.50'  
 N89°55'10"E  
 NORTH LIMITS OF GOLDEN LAKES VILLAGE SECTION NINE REPLAT (P.B. 40, PAGES 184-187)  
 S 45° 10' 39" E 35.42'

PALM BEACH FARMS CO., PLAT NO. 3  
 P.B. 2, PAGES 45-54



PALM BEACH FARMS CO., PLAT NO. 3  
 P.B. 2, PAGES 45-54

GOLDEN LAKES VILLAGE SECTION NINE REPLAT  
 P.B. 40, PAGES 184-187



0251-306  
 45/40  
*Handwritten notes and signatures in the bottom right corner.*

Field Book No. Pg.	<b>ROBERT E. OWEN &amp; ASSOCIATES, INC.</b> ENGINEERS · PLANNERS · SURVEYORS WEST PALM BEACH FLORIDA	<b>GOLDEN LAKES VILLAGE SECTION ELEVEN-A</b> SHEET 2 OF 2 SHEETS	Job No. 80-1138
Design R. BIBY			Scale 1" = 40'
Drawn A. FIELD			Date JAN. 1982
Checked			Sheet 2
			File No. BF-2319-